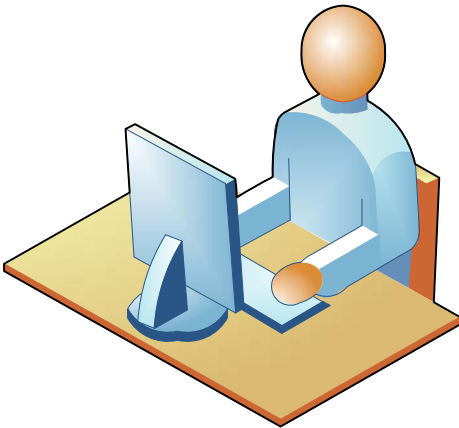


ISS eCAPTURE

User signs on to ISS Cover Page Utility

A screenshot of a Windows-style window titled "ISS Barcode". The window has a blue title bar and a close button in the top right corner. On the left side, there is the logo for "INNOVATIVE SYSTEMS & SOLUTIONS, LTD." and a barcode. On the right side, there are three text input fields labeled "User name", "Password", and "eCabinet". Below these fields are two buttons: "OK" and "Cancel".

User is presented with Folder List from eCabinet® or DocumentMall™ based upon user credentials

A screenshot of a Windows-style window titled "ISS Barcode". The window shows a folder tree on the left side with a "File Name" search box above it. The folder tree includes folders like "Calder", "Customer_Documents", "home", "adams", "adminNQA", "allison", "byram", "dan", "D ans", "demo", "Employee_Health", "gm", "hr_files", "issA4PDemo", "James", "James2", "JeCL", "Medical_Staff", "pc", "rgISS", "steve", "steveA", "Student_Records", "Temp", "TempDelete", "termination", "TestDB", "Touro", "SALESMAN", "stest", and "test". On the right side, there are several input fields. Under the heading "Text", there are fields for "Client_id", "DocumentName", "First_Name", and "Last_Name". Under the heading "Number", there is a field for "ZipCode". Under the heading "Date", there are two empty date input fields.

User enters appropriate index information for the document to be scanned. Field constraints and restrictions are supported as well as selecting from a pre-determined list of choices.

File Name

Text

Client_id
12345

DocumentName
Barcode Test

First_Name
Steve

Last_Name
Chung

Number

ZipCode
21777

Date

Optional Database logging to assist with HIPPA Compliance

Document Separator Page with Bar Code is printed

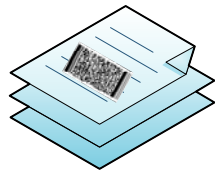
INNOVATIVE
SYSTEMS &
SOLUTIONS, LTD.

DOCUMENT SEPARATOR SHEET



Client_ID: 12345
DocumentName: Barcode Test
First_Name: Steve
Last_Name: Jones
ZipCode: 12345

User places Separator Sheet as the first page of each new document, Scans documents via MFP (may use optional ISS JeCL Java application)



Documents pass through ISS software loaded on a stand-alone PC or Server



Optional Database logging to assist with HIPPA Compliance

Documents are sent with Index values to eCabinet® or DocumentMall™

